

ARAIYS NEWS

WINTER NEWSLETTER 2021



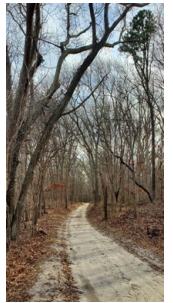
PRESIDENTS MESSAGE

Greetings,

The winter months provide a wonderful opportunity to gain a deeper appreciation of the structure or “bones” of our landscape. To see the majesty and beauty of the branching structure of an oak tree, for example, invites us to a deeper sense of depth the landscape offers. It is a time to tune in to the subtleties that are not as evident when the plants are adorned with leaf and flower. As designers, we like to visit wild spaces that inspire us and help us to stretch our imaginations of what is possible in the designed landscape. A ‘good’ design should distill and capture the essence of the beauty we discover in our rambles in nature. This beauty presents itself in many forms that can serve to re-connect us to our communities and the world at large. May 2021 provide you many opportunities for connection, renewal, and good health.

Wishing you and your family a happy and healthy New Year!

Steve Nieroda, Senior Associate



Indian Island County Park

Project Spotlight: Reinventing the Canoe Place Inn



Historic photo compliments of the Hampton Bays Historic Society



Conceptual 3-D rendering by RDA International

Araiy's Design is proud to be the landscape architects for the restoration of the historic Canoe Place Inn in Hampton Bays. After a 12 year permitting process, construction commenced in late 2019 and has made great progress throughout 2020. According to the Hampton Bays Historical Society, it is considered the oldest inn in the United States containing a rich and multilayered history that started as a trading post in the 1600's. The Inn was established in the 1700's and occupied by British troops during the Revolutionary War. Throughout its history, the inn has hosted the likes of President Franklin Delano Roosevelt, Cary Grant, Lucille Ball, and Albert Einstein. Rechler Equity Partners purchased the property in the 2000's, saving the inn from demolition. When complete, the six acre property will include the restored inn featuring a 350-seat catering venue, a 90-seat restaurant with outdoor entertainment spaces, 20-guest room suites, and a swimming pool. Additionally, five restored cottages will offer accommodations for extended stays.

For more information, please visit <https://rechlerequity.com/new-projects/canoe-place-inn>

Construction Progress Photos:



Plant installation, December 2020
Photos by Bay Gardens Landscaping



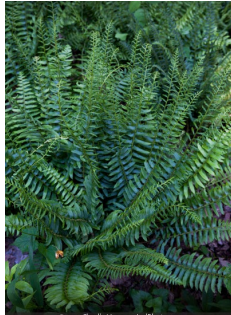
LANDSCAPE ARCHITECTS | SITE PLANNERS | DEVELOPMENT STRATEGISTS

AGAWAM STUDIO, 38 NUGENT STREET, SUITE B, SOUTHAMPTON, NEW YORK 11968
P: 631.283.1131 | F: 631.283.6677 | E: INFO@ARAIYSDESIGN.COM | WWW.ARAIYSDESIGN.



PLANTS OF THE SEASON

Native Plants Of The Season



Common Name: Christmas Fern
Scientific Name: *Polystichum acrostichoides*

A native evergreen fern, Christmas Fern are a wonderful understory plant. It is a plant best grown in deep shade but can tolerate part shade preferring rich, well-drained soil, but will tolerate a wide variety of soils. The dark green and glossy leaves have brilliant transformation when the fertile fronds emerge showing off a beautiful amber color. Reaching a mere height of 1'-2' and the same in width, it is a great plant for woodland gardens, erosion prone areas, or dispersed through a shaded border. This is also a plant that is deer resistant, making it a great addition to the landscape.



Common Name: Northern Bayberry
Scientific Name: *Morella pensylvanica*

A native, low-maintenance shrub, Northern Bayberry is best known for its fragrant bright green foliage through most of the seasons. In the winter however, it is best known for its plentiful, also fragrant, berries in which the plant gets its name. A fun fact about these berries is that they are frequently used to make candles as they contain their own wax-like substance. This shrub prefers full sun but can tolerate a part shade condition. Reaching 5'-10' in height and the same in width it is a great, deer resistant plant for a variety of uses such as native plantings, dune revitalization, hedging, and rain gardens.

Ornamental Plants Of the Season



Common Name: Golden Girl Holly
Scientific Name: *Ilex x meserveae* 'Golden Girl'

A medium sized evergreen tree, Golden Girl Holly is one of the first cultivars of holly with yellow berries in the world. A tree that bears plentiful golden berries against the luscious dark green leaves, it is a fabulous specimen to the landscape. The bright berries begin their show beginning around end of November and continue through the December holiday season. Golden Girl Holly typically reaches between 12'-15' in height and approximately 2'-6' in width with a beautiful pyramidal habit. Preferring full sun to part shade it is a great specimen tree, border plant, or hedge.



Common Name: Charity Oregon Grape
Scientific Name: *Mahonia x media* 'Charity'

A large, statuesque shrub, Charity Oregon Grape reaches 10'-15' in height and in width. A deep shade lover flowering through the winter season right in time for the Holidays in December. The sunny yellow blooms are a beautiful site in the winter landscape with purplish-blue berries that follow in the Summer months. It is a plant tolerant of some drought conditions once established. Utilize this deer resistant plant for a woodland garden, border planting, or even as a hedge and it will be sure to show off its true beauty.